

Mansfield &
Ashfield
Winter 2018
Edition

Ale & Apple



CAMPAIGN
FOR
REAL ALE



Pub openings in branch

6th South Normanton Beer Festival Preview

Cider Awards for the region

2019 Winter Ale Trail is back, bigger than ever!

Free Copy, please take me with you

Welcome to the Winter 2018 edition of Ale & Apple

Hello readers.

For your enjoyment in this issue we have yet another great micro pub opening in Sutton-in-Ashfield, which is rapidly becoming a great real ale town and a credit to the branch. Also we are pleased to report on the long awaited re-opening of the Boat Inn, Pinxton. After the decline of pubs in Pinxton this is very welcome.

I must also report that this will be my last magazine as Editor. After over two years as Editor I feel it is time to step down and let someone else take over. I hope I have served CAMRA, the Branch and you the readers well.

Richard, Editor

aleandapple@mansfield.camra.org.uk



Keeping You Informed

Find out more about Mansfield & Ashfield CAMRA -



@MANSFIELDCAMRA



Search for Mansfield & Ashfield CAMRA

Branch Website - www.mansfield.camra.org.uk

CAMRA Headquarters

230 Hatfield Road,
St Albans, Herts AL1 4LW
Tel: 01727 867201 or
www.camra.org.uk

Article submission deadline for
the Spring 2018 issue of
Ale & Apple
is 14th March 2019

Ale&Apple is published by The Mansfield & Ashfield Branch of The Campaign for Real Ale (CAMRA). 2500 copies of Ale&Apple are distributed to over 200 outlets including pubs and retail shops.

Articles are written by the membership or associated organizations. Any opinions expressed in this newsletter are not necessarily those of The Editor or CAMRA. It cannot be reproduced without permission of The Editor or Mansfield & Ashfield CAMRA.

Ale&Apple is also available to download from our website at www.mansfield.camra.org.uk

Branch Diary - Winter 2018

**Survey Trips – Depart the Railway Inn, Mansfield,
at 7pm (unless otherwise stated) – Bus free for CAMRA members.**

Thursday 31st January, Kirkby-in-Ashfield Route 1

Tuesday 26th February, Ravenshead & Blidworth

Tuesday 26th March, Upper/Nether Langwith & Shirebrook

Thursday 25th April, Farnsfield & Halam

Branch Meetings – All meetings start at 8pm on Tuesday

8th January, Bold Forester, Mansfield

12th February, TBA

12th March, TBA

Other Events

Amber Valley, Derby, Erewash, and Mansfield & Ashfield

Winter Ale Trail – Fri 4th January to Sun 17th February

Upcoming National Meetings

12/01/19 12pm, APPLE Committee,
Orchard Inn, 12 Hanover Place, Spike Island, Bristol, BS1 6XT

19/01/19 12pm, Membership Committee Meeting,
Royal Oak, 44 Tabard Street, Borough, London, SE1 4JU

19/01/19 12.30pm, Brewery Liaison Advisory Group/Champion Beer of Britain
Joint Meeting, The Woodman, New Canal Street, Birmingham, B5 5LF

26/01/19 12pm, Marketing Committee Meeting,
The Head of Steam, 7 High Pavement, Nottingham, NG1 1HF

**Anyone wishing to attend a meeting to observe is asked to notify the relevant
committee chairman in advance.**

Brewery News

Black Market Brewery - Warsop

Nothing To Report.



Firerock Brewing Co. – Sutton-in-Ashfield

FBC have opened their first micro pub in Sutton-in-Ashfield and launched a new beer there. A write up can be found on page 8.



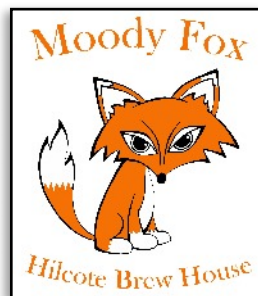
Kings Clipstone Brewery - Kings Clipstone

Nothing To Report.



Moody Fox Brewing Co. - Hilcote

Nothing to report.



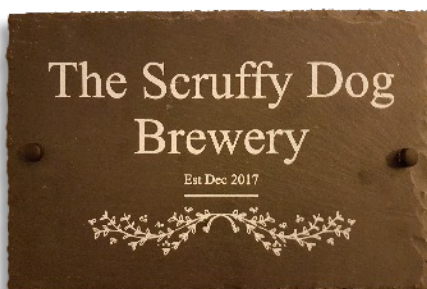
Prior's Well Brewery - Mansfield Woodhouse

After teasing us with some exciting news last issue we can now reveal that Priors Well Brewery is moving lock stock and barrel to the Making It! Discovery Centre in the old Mansfield Brewery building. Yes you heard correctly, brewing not only returns to the heart of Mansfield but also to the old brewery office buildings. Brewing ceased production here in 2002 but head brewer Dave Vann hopes to start production on site as soon as all the legals and admin have been finalised. Brewing wise the malt profiles have changed due to the lack of availability of their regular malt. Dave is experimenting with crisp maltings products in conjunction with a good amount of Maris Otter as usual.



Scruffy Dog Brewery – Sutton-in-Ashfield

Some new brews have recently come out of the newly installed third fermenter and have gone down very well; Hoppity Dawg 5% pale, Superdog, an experimental with Vienna Malt. Dog the Builder, another pale but single hopped with the same hops used for bittering as well as aroma, then dry hopped in the cask again with the same variety. Dogter Evil, a new stout for the winter months, and a Christmas beer called This Dog (is only for Christmas), a 4.3% pale session beer. Also started dry hopping Barking at the Moon which has been very popular. The Scruffy Dog pub is participating in this years Winter Ale Trail.



Merry Christmas from The Chair

Well another year is almost over and I hope you're all in good festive ale supping form.

It's been a year of changes, more micro pubs and breweries but sadly within the branch we've noticed a few pubs that have now decided to stop selling real ales, usually due to poor sales. No-One wants to drink bad beer and I understand why these decisions have been made but hopefully these pubs will have a re think, perhaps using a pin (4.5g) rather than the usual firkin (9g) and putting it on on a Thursday or Friday to cover busy

periods. It would be good to keep real ale alive in all pubs where we can.

The branch is now fully focused on our next beer festival in February. Read my preview article on page 10 for all the details.

Finally I'd like to wish you all a very Merry Christmas & Happy New Year. Have a good one folks.



*Professionally maintaining beer lines
since 2006*

Serving over 1000 customers nationwide

**A PROFESSIONAL SERVICE that
SAVES you money**

FREE up your valuable time

CONSISTENT PRODUCT QUALITY

**FINANCIAL BENEFITS - 67% saving on
waste**

NO CONTRACTS & NO UPFRONT COSTS

Get In touch for a FREE, NO OBLIGATION line clean

Tel: 0800 7810577 or 07990 914495

Email: davewheal@clearbrew.co.uk

www.clearbrew.co.uk

A photograph of the interior of The Horse & Jockey pub. Two staff members are behind the bar, which is well-stocked with various beers. The pub has a rustic feel with wooden beams and a clock on the wall.

The Horse & Jockey

Church Lane, Selston, Nottingham NG16 6FB
Tel (01773) 781012

Mansfield & Ashfield CAMRA
2012 & 2014 Pub of the Year (Nottinghamshire)

Up to six Real Ales Available
Folk Night Wednesdays & Quiz Night
Sundays
CAMRA Good Beer Guide entry 2008-10, 2012-17

A photograph of the exterior of The Horse & Jockey pub, showing the building's facade and a sign.A photograph of two beer balloons, one red and one black, hanging from a string.



The Scruffy Dog

94 Station road | Sutton-in-Ashfield | NG17 5HF

www.thescruffydog.co.uk | 01623 550826



Up to six changing Real Ales and two Real Ciders, including local breweries
A wide range of drinks available including craft lagers



Families and Dogs welcome
Enjoy our large beer garden

opening hours-

mon closed

tues closed

wed 4 - 11.30

thurs 4 - 11.30

fri 4 - 11.30

sat 12 - 11.30

sun 12 - 10.30

open bank holiday

mondays 12 - 10.30

bus routes-

trent barton 3c

black cat

ninety

Mansfield & Ashfield

CAMRA Pub of the

season winter

2015

Good Beer Guide

2017 & 2018



HELLO SMELLY .

KEITH MILLS .



follow us on facebook for events [facebook.com/Scruffydog](https://www.facebook.com/Scruffydog)

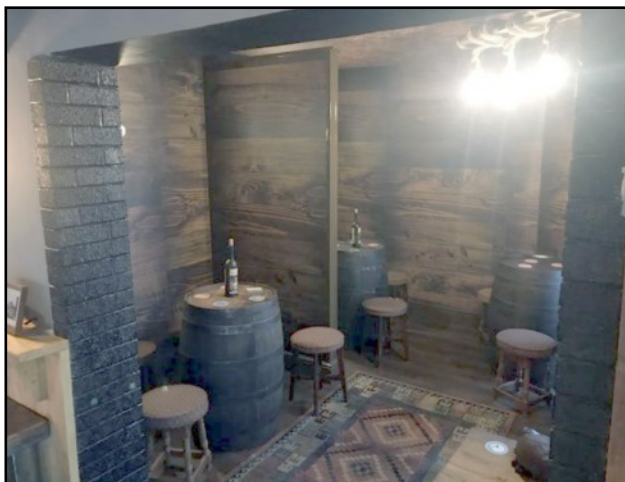
FireRock Brewing Company Micro Pub

December saw the opening of FireRock's new venue on Outram Street, Sutton-in-Ashfield. Specialising in craft beers, rums and whiskeys with more rooms than your average micro pub with a rum room, indoor heated biergarten and a stage area for live music, which on the opening weekend featured acoustic sessions from members of Shanks' Pony and the Dukes of Pork. There is a selection of real ale including the launch of FireRock's latest beer Thunderstruck a 5.5% oatmeal IPA alongside Adnams Ghost Ship also

with good quality lagers and ciders. They plan to rotate the beers between there own and guest ales on a regular basis.

All in all a good opening weekend and good luck to them in the future.

Cheers
Ralph Golds





6th South Normanton Beer Festival

Hello Everyone, welcome to my preview of the 6th South Normanton Beer & Cider Festival.

Thursday Feb 7th 2019 is the opening date for our next Festival and building on previous years successful events we'll be back at the Post Mill Centre in South Normanton, opening from 7pm on Thursday, 11am on Fri & Sat and 12pm for the mop up session on Sunday (if we have any beer left) If you've not been before this is a large modern community centre with a main room for the festival where we'll have a really good selection of 40+ Cask Ales, Ciders & Fruit Wines, plus quiet areas for a chat and a beer away from the busy main room. We'll also have the onsite café running for festival food. And the bar at the centre has a good choice of Gins, Keg Beers and Minerals and there's free WiFi access in the building. There will also be a few more trade stands this year. Hopefully something for everyone.

The Post Mill Centre South Normanton is easily accessible, just off the Market Place, behind Heron Foods. The nearest railway station is Alfretton and regular buses would then bring you into the village. The Trent Barton 9.1 & 9.3 run various routes between Mansfield, Sutton in Ashfield, Kirkby in Ashfield, South Normanton, Ripley and

Derby, with the 9.1 stopping on the Market

Place just a few yards from the centre. The centre has a large car park if you're having to drive.

We're also family friendly up to 6pm. With live music on Friday & Saturday it's going to be a lively event!

If you're a local business and would like to get involved with our community event, we have several affordable sponsorship packages. Please contact me for more details. So to conclude, put a note in your diary now and we'll see you there.

Do you have any free time in February? We're looking for volunteers to help with the festival, If you can give us your support we'd love to hear from you. We need help with setting the festival up, work on the bar and keeping the place tidy. If you'd like more info email me or come to a meeting, dates are listed in the mag and my contact details are- chair@mansfield.camra.org.uk

Andy Edson – Beer festival organiser.



**CAMPAIGN
FOR
REAL ALE**

CAMRA PROUDLY PRESENTS

400+ CASK ALES, CIDERS & PERRIES, BOTTLED WORLD BEERS, MEADS

**CRAFT KEG BEERS
GIN BAR**

**LIVE MUSIC
FOOD STALLS**



20th - 23rd FEBRUARY

AT THE HISTORIC
ROUNDHOUSE
PRIDE PARK, DERBY, DE24 8JE

**WEDNESDAY
5PM-11PM**

**THURSDAY-SATURDAY
12NOON - 11PM**

FREE ENTRY FOR CAMRA MEMBERS
(WITH VALID MEMBERSHIP CARD)

UNDER 26s HALF PRICE - OVER 60s FREE LUNCHTIMES
(WITH PHOTO I.D.)

**FOR MORE DETAILS INCLUDING PRICING VISIT
WWW.DERBYCAMRA.ORG.UK/WINTER-BEER-FESTIVAL**



Many of our readers will have been aware that the Nottingham branch had to move their festival venue this year from the Castle to the Motorpoint Arena. I was there on the Wednesday to be part of the team of judges whetting their taste buds with a selection of the East Midlands cider and perry producers to pick the cream of the crop. It was an impressive sight going into the Cider Barn seeing all the offerings displayed. A fantastic selection falling just short of 300 different ciders and perries. I was on



Sneinton Cider Co.

both the opening round and the final judging and it was a hard choice to pick the best, but in the end the Gold for the draught cider went to the relatively new producers in Nottingham, Sneinton Cider Company with their 6.5% medium sweet Completely Wholesome Apple Beverage. Over in the pear department Blue Barrel Cider, based in Sherwood, Nottingham, took Gold in the draft perry category with their small batch 6.5% medium sweet Cropwell Perry, for the second year running. Also in the medals were Three Cats of Morely, Derbyshire, with



Cider Barn

silver for their 6.7% Medium draft cider and Oakfield Farm, based in Stanley Common near Ilkeston, taking both Bronze with their 6% Taste of the Orchard draft and also Gold in the bottle category made from Derbyshire and Herefordshire apples. Blue Barrel Took Silver with their bottled Sherwood Blend. Congratulations to all the winners!

I went over to the Beer HeadZ micropub at Nottingham recently to see Sneinton and Blue Barrel pick up their certificates and lend a helping hand to Leo!

By now the cider makers will have harvested most of this years fruits, especially as some were saying their apples fell early this year and predicted quality over quantity due to the hot summer. As they are cleaning down the cider presses here's a closer look at three more apple varieties that



you may not be familiar with. First up is Slackma-Girdle (not to be confused with a Gloucestershire cheese of the same name), an old variety



of cider apple grown predominantly in the South West, especially Devon where it is said to have originated. The unusual name is thought to be connected to the effect of the drink on the digestive system or having to loosen the trousers belt after an over indulgence of cider! The fruits tend to be flattish in shape, medium sized with yellow skin overlaid with red and striped red flesh. It is classed as a sweet apple as it is low in both acid and tannin and produces juice that is rich and full bodied with a woody aroma making a good apple for blending. However, Robert Hogg, a Scottish nurseryman and pomologist considered it in the mid 1800's to be an apple with not much merit. Though early to flower the fruits ripen late and in some parts can still be on the tree as late as New Year. It is also good when used in jam making. It is sometimes confused with Northwood, a cider apple originating from the Crediton area in Devon around 1800. Again classed as a sweet apple based on the classification

system devised by Professor B T P Barker, the first director of the Long Aston Research Centre near Bristol, based on the tannin and malic acid percentage in the pressed fruit. The tree has a round head bearing fruit throughout the tree that has pale yellow/green skin producing a sharp bitter, pale yellow juice with a hint of pineapple.

At the other end of the scale is the bittersharp cider apple called Cap Of Liberty with high tannins and malic acid content. These apples are also known as 'spitters' due to the unpalatable nature of the fruit. It is a traditional cider apple originally from the Martock area of Somerset dating back to the 13 and 14th centuries

where it is sometimes referred to as Red Soldiers or Bloody Soldier. After the 1920's it was rarely planted although it is considered to be of vintage quality due to its ability to produce complex, interesting flavours and is good for making single varietal ciders with a mildly acidic bittersharp flavour. Although susceptible to scab and die back it is now being stocked by many nurserymen and ripens in September.



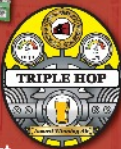
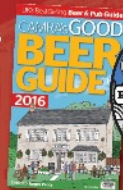
Derby CAMRA Pub of the Year 2016



The Brunswick Inn and Brewery



- We are in it! Good Beer Guide 2016
- Brunswick Bottle Shop NOW OPEN
- 16 Gask Ales
- 16 Real Ciders & Perry
- Brunswick Hop Garden
- Brunswick Club Card Scheme
- CAMRA Discount with Membership Card
- Live Music - Jazz First Thursday Every Month
- Derby CAMRA City Pub Of The Year 2015 - Finalist
- Food Served: Monday to Saturday 11.30am - 2.30pm
Wednesday to Friday 5.30pm - 8pm & Sunday 12noon - 3pm



Award-winning ale from Derby's oldest brewery

Keep a look out for our exciting new seasonal ales created by James, if you would like to know more, he would love you to pop in for a chat or give him a call!

For orders and enquiries call 01332 410055 or email: info@brunswickbrewingcompany.co.uk

Regular regional deliveries available
Bottle conditioned beers available

Now for 2015, single hop range - Call for details

*Straight off the train in Derby - perfect!
Why go anywhere else?*



For high security locks and handles.

ULTION

Home Defence System



Our high security lock:

- Approved by British Standards.
- Approved by the Police.
- Prevent your keys from being copied without your permission with Key Control.

GUARANTEE
If an intruder burgles
your home by snapping
Ultion we'll pay you
£1000



bsi.



Lock Lock

A new way of locking
your doors, with or
without a key.

Our high security handle:

- TS007 2 star
- Secure by design
- Sold secure



Lock Fitter

www.lockfitter.co.uk
01623 334433

Find us  /lockfitter

COME and JOIN the...

Amber Valley, Derby, Erewash & Mansfield

20



19

Winter Ale Trail

VISIT

45 Pubs
in the
Amber
Valley
CAMRA
Area

34 Pubs
in the
Derby
CAMRA
Area

18 Pubs
in the
Erewash
Valley
CAMRA
Area

21 Pubs
in the
Mansfield &
Ashfield
CAMRA
Area

4TH JANUARY – 17TH FEBRUARY

Details in Derby Drinker



Three Thirds - News in small measures

The Cricketers Arms in Kirkby-in-Ashfield had a re-opening party on 16th Nov offering a larger ale choice. Sadly we didn't have time to visit before this issue went to print so look out for a full write up next time.

As a result of an agreement between CAMRA and Greene King, GK have agreed to offer a discount in all 500 Hungry Horse pubs of 10% off real ale to members. This include the Badger Box, Bold Forester, and the Snipe.

This year our branch is hoping to engage more of the near 1000 members we have. If you would like to get involved please get in touch, or come to one of our events listed in the diary.

NEWLY REFURBISHED | HOMEMADE FOOD | LIVE ENTERTAINMENT | WEEKLY QUIZ



Duke of Sussex

A DELICIOUS RANGE OF LOCAL
CASK & CRAFT BEERS
AVAILABLE AT ALL TIMES



Tel. 01623 511 469

www.duke-of-sussex.co.uk

Alfreton Road, Sutton in Ashfield NG17 1JN

**PENTRICH
BREWING Co**

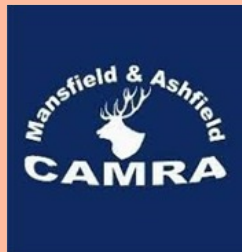
Join us on the Amber Valley, Derby, Erewash, and Mansfield & Ashfield Winter Ale Trail 2019

After two successful years, the Winter Ale Trail returns, beginning on January 4th and ending on February 17th 2019, just a few days before Derby CAMRA Winter Beer Festival. This year we welcome our friends from Erewash Valley CAMRA who, having expressed an interest in joining in the fun, suggested several of their pubs, most of whom are involved.

The total number of pubs taking part this year is 118 over the 4 branches and the 21 pubs taking part from the Mansfield & Ashfield area can be seen on the grid opposite this page. These include the reigning Mansfield champion The Dandy Cock, and the runner up The Duke of Sussex. Can they keep their crowns this year? That's up to you fellow drinker because as always we are asking everyone who follows the Trail to vote for their top 3 pubs, which will help us decide the winning pubs in each CAMRA area. You don't have to be a CAMRA member to take part in this, or cover every pub in each area – just nominate your top 3 pubs from Amber Valley, Derby, Mansfield & Ashfield and Erewash Valley if you get to all 4 areas, or if you don't then let us know your top 3 from wherever you've been.

As in previous years there will be **beer prizes** for those who visit a number of pubs and collect stickers from each one, so for full details of how to vote, how to enter, the trail collector card, and what you can win is in the Jan/Feb 2019 issue of **Derby Drinker** magazine which you should be able to pick up in any of the 21 Mansfield & Ashfield pubs listed. So, enjoy the trail, enjoy the ales, and let us know which your favourite pubs are, we look forward to hearing from you. For information on how to get to the pubs on the trail using public transport and opening times, please see Whatpub.com where all the relevant information is available.

Pubs marked with a * may be closed for part of January. It would be advisable to check directly with the pub before travel.



Mansfield & Ashfield Pubs	
Bold Forester	Botany Avenue, Mansfield
Brown Cow	31 Ratcliffe Gate, Mansfield
Dandy Cock Ale House	184a Victoria Road, Kirkby – in - Ashfield
Devonshire Arms	137 Market Street, South Normanton
Dog House	84-86 Station road, Kirkby-in-Ashfield
Duke of Sussex	Alfreton Road, Sutton – in - Ashfield
Garrison	Leeming Lane, Mansfield
Ginger Giraffe	14 Alfreton Road, Underwood
Horse & Jockey	Church Lane, Selston
The Lion	Hall Lane, Brinsley
The Miners Arms	308 Stoneyford Road, Sutton-in-Ashfield
Picture House	Forest Street, Sutton – in - Ashfield
The Pit *	Tilford Road, Newstead
Railway Inn	9 Station Street, Mansfield
The Regent	Kingsway, Kirkby-in-Ashfield
Scruffy Dog	Station Road, Sutton-in-Ashfield
Speed the Plough	Mansfield Road, Sutton – in - Ashfield
Squire Muster	158 Forest Road, Annesley Woodhouse
Stag & Pheasant	4 Clumber Street, Mansfield
Widow Frost	41 Leeming Street, Mansfield
Wrinkly Dog *	65 Outram Street, Sutton – in - Ashfield

Ask Michael



Dear Michael,

Please ask your Apple Officer to explain simply how an apple falling on Isaac Newton's head led to the latter's DISCOVERY of the Law of Gravitation.

Best Wishes,
Granny Smith.

ps To get the job did your officer have to fill in an application form?

Dear Maria Ann Smith,

I hope you don't mind me calling you by your full name, as many readers will only know you simply as Granny, and a good few will be surprised to know you emigrated to Eastwood from Beckly, East Sussex in 1839, though not Eastwood favoured by D. H Lawrence and home of many micro-pubs, but the one in New South Wales, down under, where on your farm in 1868 your apple was propagated, most likely a hybrid of *Malus Sylvestris* the European apple and the North American apple *Malus Pumila* as the pollinator. If you were alive today rather than sending this question from 'the other side' you'd be delighted to know that by 1975 40% of Australian apples produced were named after you and the US Apple Association say it is 1 of the 15 most popular apples grown in the USA today.

Even the Fab 4 adopted it for their Apple label. But, it wasn't the one to allegedly fall on Newtons bonce, nor was it the Discovery as this didn't hit the commercial markets until as recently as 1962 (though it had been trialled under the name Dummers Pippin and Thurston August by Sufflok nurseryman Jack Matthews and had been raised initially by fruit farm worker George Dummer). When Newton pondered the complexities of classical mechanics in the 1660's these apples were not around. It was indeed a Flower of Kent, a tree which still grows in the garden of his home, Woolsthorpe Manor in Grantham. It has never been proven either that the apple did fall on his head but rather nearby while he was working in the garden prompting Issac to wonder why it went downwards and not sideways or even upwards. In1687 in his publication *Philosophiae Naturalis Principia Mathematica* he formulated the laws of motion and universal gravitation, which in a nutshell says, gravitation is a force which causes any two bodies to be attracted to each other with the force being proportional to the product of their masses and inversely proportional to the square of the distance between them. It is tied up in a general physical law derived from empirical observation Newton called indicative reasoning. Soon after his

Want to ask Michael a question?

Send them to us at

aleandapple@mansfield.camra.org.uk

eureka moment was scribbled down he took himself off to his local to celebrate ordering a pint or two of the 4.1% Newtons Drop, by Grantham brewery Oldershaw. Forms? More like natural selection I'd say.

Good luck with the physics O level.

Dear Michael,

I notice in this edition you make reference to a certain light coloured cider sold in the off trade and in plastic bottles, but how do you know what it tastes like?

Yours interested

Mr Steropes, Greece

Dear Mr Steropes

Thank you for reading our magazine so thoroughly and your interest in your names sake, that of lightning. No doubt your ancestors were around at the time Matthew was writing his scriptures and he too would have been familiar with the drink in question when he wrote, 'And his appearance was like lightning and his clothing as white as snow'. It is debatable whether the drink got its name from this quote, but it's fair to say White Lightning is one of the worlds premier degreasing lubricants used by modern cyclists acting to repel dirt and road muck from their drive train. Why, only the other week copious quantities may have been used to help cyclists move effortlessly into our town. In fact I thought I glimpsed several sporting 3 Litre PET bottles of the stuff on the Reynolds 531 downtube of the their cycles as they sped down Chesterfield

Road chains and derailleur gears a blur, in the direction of the hospitality tent ready to quench their thirst with a swift orange and citrus flavoured Chain Reaction Pale Ale by Fixed Wheel. In fact it is a mistake to call them gears as they are technically sprockets, driven not by one another but by a chain. Derived from the French to mean derailment of a train from its tracks, one of the earliest examples was of a two speed derailleur on the Whippet Safety Bicycle of 1885 designed by C M Lindley and made by Lindley and Briggs in London. It was not until 1937 that derailleur gears were allowed in the Tour de France, allowing riders to change gear without having to dismount and change wheels from downhill to uphill mode or vice versa. Taste it? No way, its got chemicals in it! By the way do you and your brothers Brontes and Arges fancy a drop of Miltons Cyclopes? Good luck at the velodrome.

Mick.

And all together now sing along with Mick...

Well I asked my old pappy why he called his brew,

White Lightning 'stead of mountain dew.

I took a little sip and right away I knew,
As my eyes bugged out and my face turned blue.

Lightning started flashing and thunder started crackin'

Whshhhoooh ...white lightning.

The Big Bopper

Awards Round-Up

There are two CAMRA awards to report on this issue; firstly

the Horse & Groom in Scarcliffe received the Pub of the Season

Summer 2018 award. This charming rural pub is over 500 years old and has been in the same family for over 15 years.

Caroline Butler can be seen with her certificate behind the range of seven beers that are available all year round along with one cider. A regular entry in the Good Beer Guide the Horse & Groom is in a perfect location for tourists visiting nearby historic Bolsover as they offer onsite accommodation. Locally made pork pies must be tried!

The second award goes to the Dandy Cock Ale House & Gin Parlour. This



Cask Marque accredited pub just can't stop winning awards! Jo and Phil must have done something right when they opened their micro in Kirkby-in-Ashfield. Pictured with some of her regulars Jo is receiving her certificate

from branch chairman Andy Edson. Come on guys, stop it now or you're going to need a bigger pub to hang all your awards in!! Four beers and up to six ciders are on offer alongside the impressive gin range, and there are plenty of treats for well-behaved dogs.





Get Your Award Winning Blue Monkey Real Ales

at More Blue Monkey Pubs...



The Organ Grinder Nottingham
Canning Circus, Nottingham NG7 3JE



The Organ Grinder Arnold
133 Front Street, Arnold NG5 7ED



The Organ Grinder Loughborough
4 Wood Gate, Loughborough LE11 2TY



The Organ Grinder Newark
21 Portland St, Newark NG24 4XF

Waggon & Horses Bleasby
Gipsy Lane, Bleasby NG14 7GG
You'll always be able to get a superb pint of BG Sips here!

The Monkey Bar
www.blumonkeybar.co.uk
The bar that comes to you!

One in three pints served over Christmas won't be 'up to scratch':

One in three pints served during the Christmas trading period won't be up to scratch, according to new research by beer quality and insights expert Vianet. Its draught insight report showed that of the 13,000 barrels of beer sold on the "Mad Friday" before Christmas last year, 4,000 were poured through unclean lines or at the wrong temperature. Vianet managing director Steven Alton said: "In the pub

trade we have got to get to grips with consistently serving great-quality beer and understand the impact this has on individual outlets and larger pub estates when we don't. If we are serving one in three customers over Christmas with a poor pint, we are letting them down. Christmas is an opportunity to retain loyal customers and grow your customer base by gaining new ones." The insight was gathered between October 2017 and September 2018. Apart from the Fifa World Cup match between Sweden and England, the highest earning session for British pubs was Friday, 22 December closely followed by Christmas Eve.

Three-quarters of Brits enjoy pubs around Christmas:

Almost three-quarters (73%) of Brits say they enjoy going to a local pub during the festive season, according to new research by Suffolk-based brewer and retailer Greene King. A study of almost 1,000 UK consumers found Christmas Eve is the most popular time to visit the pub, with more than two-fifths (44%) of consumers planning to visit on Christmas Eve, compared with little more than one-third (34%) on New Year's Eve. More than three-quarters (76%) said the Great British pub played an important role during Christmas, with 72%

stating going to the pub was a tradition and 45% likely to visit the pub more often during the festive period than during a regular two-week period. A pub's ambience is important to customers, with almost three-fifths (57%) citing Christmas decorations as the most important aspect of the pub during the festive period, while 55% of respondents find the festive food menu most important. Greene King chief executive Rooney Anand said: "For many, the pub is the number-one choice of venue to celebrate the Christmas period, signifying the important role of the pub in the heart of communities."

SPOT THE DIFFERENCE

It was observed at the last **South Normanton Gala Day** that even the emperors' royal guard and his henchmen take time out to enjoy some quality ales? But there are 10 fiendish differences between these 2 pictures; can you spot them all rebel scum?! Answers in the next issue.



DUNDEE

**CAMRA
Members'
Weekend,
AGM &
Conference**

**Caird Hall
5th – 7th
April 2019**



**CAMPAIGN
FOR
REAL ALE**

Caird Hall, Dundee 5 - 7 April 2019

Hosted by Scotland and Northern Ireland Branches

Please register online at agm.camra.org.uk or complete the form below and return to: CAMRA, 230 Hatfield Road, St Albans AL1 4LW.

Membership # _____ Joint Membership # (if applicable) _____
First Name _____ First Name _____
Surname _____ Surname _____
Email _____

If you would like to volunteer, please indicate when you can help and the staffing officer will contact you in due course. Your information will be treated in accordance with CAMRA's Privacy policy.
camra.org.uk/privacy-policy

Tue AM/PM Wed AM/PM Thu AM/PM Fri AM/PM Sat AM/PM Sun AM/PM

Please circle if you have any specialist skills: first aider / cellerman / local knowledge / logistics / customer service / other.

(Closing date for postal & online registration is 25th March 2019)

Find out more by emailing volunteer.services@camra.org.uk or call 01727 798456

SPOT THE DIFFERENCE ANSWERS

How many did you get ? Here are the answers to last editions Spot the Difference.



Annette and Garry welcome you to
THE NAGS HEAD
Pleasley



Up to 6 Real Ales
Sunday Roast Special £7.50 for 2 courses

Quiz Night Saturday
Function Room for hire

Open 5-11 Mon to Fri, 12-12 Sat & Sun
Tel - 01623 810235

We're supporting

Try January
Cask &
Keg &
Bottle &
Can.

Make it your mission to support independent beer businesses in January. Help spread the word by tagging your posts, pics and tweets with:

#Tryanuary

Visit www.tryanuary.com to find out more!



Boat Inn at Pinxton Wharf

For any residents of Pinxton above a



certain age the Boat Inn was a favourite haunt during the long summer months, a steady walk, a quality beer, and a sit by the abandoned canal watching the young ones playing in the ample grounds and on the swings. Sadly we thought those days were no more... until December 2018 when the Boat Inn reopened. Unrecognisable in its new form the inn has undergone a major overhaul after being purchased by Lowe Leisure Ltd in 2006. Gone are the white washed walls and Formica table tops; in is a very tasteful and respectful dark wood modern, yet rustic looking, interior. Major work commenced which included digging a new cellar, building a completely new extension, bar and dining room. 4 Beers

adorn the bar with Sharps Atlantic and Greene King Abbot as the house regulars alongside 2 quests, Robinsons and Caledonian available on our visit.

Local produce is used extensively across the menu which is available until 9pm every day. The inn was built in 1795 when the Pinxton branch of the Cromford Canal was cut. The wharf was the terminus for the canal, which was built to link the collieries to the river Trent, and is very important to the area's

heritage. For a village that has lost almost all of its public houses, the Boat Inn reopening will hopefully add a community heart to this once thriving mining village. The pub is located right at the bottom end of the village on Alexandra Terrace. If you are not familiar with the area it would be advisable to check directions with the pub before travel on 01773 861600.



Join up, join in, join the campaign



**CAMPAIGN
FOR
REAL ALE**

From
as little as
£25*
a year. That's less
than a pint a
month!

Protect the traditions of great
British pubs and everything that
goes with them by joining today
at www.camra.org.uk/joinup

Or enter your details and complete the Direct Debit form below and you will receive
15 months membership for the price of 12 and save £2 on your membership subscription

Alternatively you can send a cheque payable to CAMRA Ltd with your completed form,
visit www.camra.org.uk/joinus, or call **01727 798440**.* All forms should be addressed to
Membership Department, CAMRA, 230 Hatfield Road, St Albans, AL1 4LW.

Your details:

Title Surname
Forename(s)
Date of Birth (dd/mm/yyyy)
Address
.....
..... Postcode
Email address
Daytime Tel

	Direct Debit	Non DD
Single Membership (UK)	£25 <input type="checkbox"/>	£27 <input type="checkbox"/>
Joint Membership (Partner at the same address)	£30 <input type="checkbox"/>	£32 <input type="checkbox"/>

For concessionary rates please visit
www.camra.org.uk or call **01727 798440**.

I wish to join the Campaign for Real Ale, and
agree to abide by the Memorandum and
Articles of Association which can be found
on our website.

Partner's Details (if Joint Membership)

Title Surname
Forename(s)
Date of Birth (dd/mm/yyyy)

Signed
Date

Applications will be processed within 21 days.



Instruction to your Bank or Building Society to pay by Direct Debit

Please fill in the whole form using a ball point pen and send to:
Campaign for Real Ale Ltd, 230 Hatfield Road St. Albans, Herts AL1 4LW

Name and full postal address of your Bank or Building Society

To the Manager Bank or Building Society
Address
Postcode

Name(s) of Account Holder

.....

Bank or Building Society Account Number

.....

Branch Sort Code

.....

Reference

.....

Service User Number

9 2 6 1 2 9

FOR CAMRA OFFICIAL USE ONLY

This is not part of the instruction to your Bank or Building Society
Membership Number
Name
Postcode

Instructions to your Bank or Building Society

Please pay Campaign For Real Ale Limited Direct Debits
from the account detailed on this instruction subject to
the safeguards assured by the Direct Debit Guarantee. I
understand that this instruction may remain with Campaign
For Real Ale Limited and, if so, will be passed electronically
to my Bank/Building Society.

Signature(s)
Date



This Guarantee should be detached
and retained by the payer.

The Direct Debit Guarantee

- This Guarantee is offered by all banks
and building societies that accept
instructions to pay by Direct Debit
- If there are any changes to the amount,
date or frequency of your Direct Debit
The Campaign for Real Ale Ltd will notify
you 10 working days in advance of your
account being debited or as otherwise
agreed. If you request The Campaign
for Real Ale Ltd to collect a payment,
confirmation of the amount and date
will be given to you at the time of
the request
- If an error is made in the payment of
your Direct Debit by The Campaign
for Real Ale Ltd or your bank or
building society, you are entitled to
a full and immediate refund of the
amount paid from your bank or
building society
- If you receive a refund you are not
entitled to, you must pay it back
when The Campaign Real Ale Ltd
asks you to
- You can cancel a Direct Debit at any
time by simply contacting your bank
or building society. Written confirmation
may be required. Please also notify us.

Banks and Building Societies may not accept Direct Debit Instructions for some types of account.

*Price of single membership when paying by Direct Debit. *Calls from landlines charged at local rates, cost may vary from mobile phones.
New Direct Debit members will receive a 12 month supply of vouchers in their first 15 months of membership.

CAMRA Discounts

Please take advantage of these members' benefits to show the establishments that we do appreciate their generous offers.

Please note: These offers can change or be removed at any time. Please e-mail pubsofficer@mansfield.camra.org.uk if you discover any changes.

The following offers can be obtained on cask ales by simply showing your valid CAMRA membership card.

Badger Box, Kirkby-in-Ashfield: 10% off
Black Swan, Edwinstowe: 15p off pint only
Bold Forester, Mansfield: 10% off
Boundary, South Normanton: 10% off
Court House, Mansfield: 20p off pint only
Dandy Cock, Kirkby-in-Ashfield: 10p off pint only
Duke of Sussex, Sutton-in-Ashfield: 15p off pint only
Dukeries Lodge, Edwinstowe: 15p off pint only
Fox and Crown, Skegby: 10% off
Green Dragon, Mansfield: 10% off
Hutt, Ravenshead: 10% off
New Inn, Newton: 15p off pint only
Oak Tree, Mansfield: 10% off
Railway, Selston: 10p off pint only
Rose and Crown, Sutton-in-Ashfield: 10p off pint only
Rushley, Mansfield: 10% off
Snipe, Sutton-in-Ashfield: 10% off
Talbot Inn, Mansfield: 10% off

The following discounts are available to everyone.

Green Dragon, Mansfield: Buy 8 pints cask ale, get one free. Loyalty card
Nell Gwyn, Mansfield: Buy a loyalty card for £8. Lifetime money off everything.

Plough, Warsop: Buy 10 pints cask ale, get one free. Loyalty card
Swan, Mansfield: Buy 5 Pints cask ale, get one free. Loyalty card
Tap Haus, Mansfield Woodhouse: Buy 6 pints cask ale, get one free. Loyalty card

Branch Contacts-

Chairman Andy Edson chair@mansfield.camra.org.uk

Vice Chairman Paul Edwards vicechair@mansfield.camra.org.uk

Treasurer Jonathan Evans treasurer@mansfield.camra.org.uk

Secretary Hillary Dawson secretary@mansfield.camra.org.uk

Membership Roger Chadburn membership@mansfield.camra.org.uk

Pubs Campaigning Coordinator Paul Edwards pubsofficer@mansfield.camra.org.uk

Beer Festivals Andy Edson beerfestivals@mansfield.camra.org.uk

Social Secretary Paul Edwards socialsecretary@mansfield.camra.org.uk

Magazine Editor Richard Alexander aleandapple@mansfield.camra.org.uk

Apple Officer Mick Bull cider@mansfield.camra.org.uk

Young Members Clare Tasker youngmembers@mansfield.camra.org.uk

Branch Equipment Controller Andy Edson branchequipment@mansfield.camra.org.uk

Webmaster Hillary Dawson website@mansfield.camra.org.uk

Press & Publicity Ralph Golds press@mansfield.camra.org.uk

Sponsorship Carl Brett sponsorship@mansfield.camra.org.uk

Staffing Roger Chadburn staffing@mansfield.camra.org.uk



A family-run freehouse
offering up to 6 Real
Ales and an impressive
menu of freshly
prepared local food

Opening Times

(Mon - Sat) 11.30 - 3 &
5.30 - 11

(Sun) 12 - 3 & 6 - 10.30

2012-17 Good Beer
Guide Entry



The Forest Lodge Hotel
2 Church Street, Edwinstowe,
Nottinghamshire NG21 9QA
☎(01623) 824443



**DANCING
DUCK
BREWERY**



**AWARD
WINNING
BEER**



**CHAMPION STOUT
OF BRITAIN - CAMRA**




**BRONZE MEDAL
SUPREME CHAMPION
BEER OF BRITAIN - CAMRA**


**CHAMPION STOUT
OF THE MIDLANDS - SIBA**

**SUPREME CHAMPION BEER
OF THE MIDLANDS - SIBA**

01332 205582

07581 122122

 [@dancingduckbeer](https://twitter.com/dancingduckbeer)

 [dancingduckbrewery](https://www.facebook.com/dancingduckbrewery)

www.dancingduckbrewery.com



Tricia & Bill welcome you to

The Devonshire Arms

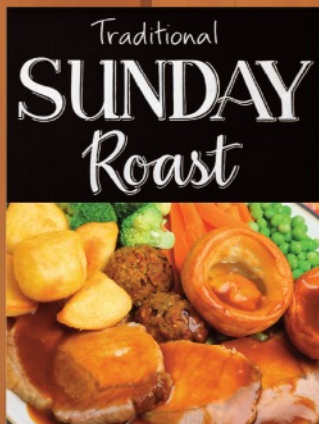
137 Market Street, South Normanton.
01773 810748 www.TheDevonshireArms.pub

A traditional village pub offering up to 5 Real Ales & 3 Traditional Ciders

HOME COOKED FOOD AVAILABLE

(including Vegetarian, Vegan and Coeliac options)

Booking advised for The Sunday Carvery



Bar Opening Hours

Mon-Thurs 12 noon-1am

Fri & Sat 12 noon-2am

Sun 12 noon-12 midnight

Food Served

Noon-8pm Mon to Sat

Bank Holidays 12 noon-4pm

Carvery on Sundays 12 noon-3pm

This pub
supports
the aims of



CAMPAIGN
FOR
REAL ALE

Mansfield & Ashfield CAMRA
Derbyshire Pub of the Year
2008 - 2018 Eleven Consecutive Years



/TheDev.DE552AA